

COMPANY PROFILE

Africa Last Mile Action in Health
ALM**H**
The Last Step

**ELWA Community, Paynesville City,
Montserrado County, Monrovia,
Liberia.**

Table Of Content

Contents

- 1 **Welcome Message**
- 2 **Who We Are**
- 3 **Vision & Mission**
- 4 **Our Service**
- 5 **How We Work**
- 6 **Meet The Team**
- 7 **Our Contact**



Welcome Message

Welcome to ALMAH!

At Africa Last Mile Action in Health (ALMAH) Inc., we believe in community power and health equity. Our mission is to enhance population health outcomes through innovative solutions, collaboration, and individual empowerment.

We work to improve health systems, provide essential services, and promote sustainable health practices.

Our initiatives include workforce development, laboratory strengthening, immunization systems, data quality, pharmacovigilance, supply chain logistics, and mental health support.

We serve diverse African populations, focusing on vulnerable and marginalized communities. We also prioritize the professional development of public health workers, promote the One Health approach, and support local manufacturing and infrastructure.

Thank you for your interest. Your support and collaboration are vital to our success. Together, we can impact the health and well-being of communities across Africa.

Warm regards,
The ALMAH Team

Who We Are

AFRICA LAST MILE ACTION IN HEALTH (ALMAH) Inc. is a non-profit organization committed to enhancing public health outcomes across Africa. Headquartered in ELWA Community, Paynesville City, Montserrado County, Monrovia, Liberia.

ALMAH operates liaison offices in both West and East Africa. This strategic presence allows us to effectively address public health challenges across diverse regions and communities.

At ALMAH, our core mission is to pioneer innovative health solutions that meet the unique needs of African populations. We strive to collaborate with a wide range of stakeholders, including government agencies, international organizations, and local communities, to implement effective health interventions.

By leveraging these partnerships, we aim to drive impactful change and improve health systems across the continent. Empowering communities to lead healthier lives is at the heart of what we do. Through education, capacity building, and the provision of essential health services, ALMAH is dedicated to creating sustainable health improvements. Our focus on preventive healthcare, infectious disease eradication, and mental health support ensures that we address the most pressing health issues facing African populations today.

Vision & Mission



Vision

We aspire to create a future where preventive healthcare is prioritized, infectious diseases are eradicated, and mental health is supported with the same vigor as physical well-being.

Mission

To enhance population health outcomes, our organization is dedicated to pioneering innovative solutions, collaborating with stakeholders, and empowering individuals to lead healthier lives.

What We Do

At ALMAH, we offer a wide range of services to address diverse public health needs:

- **Public Health Workforce Development**
- **Public Health Laboratory Strengthening**
- **Immunization System Strengthening**
- **Data Quality System Strengthening**
- **Pharmacovigilance & Safety Surveillance**
- **Supply Chain & Logistics**
- **Mental Health, Psychosocial Support & Substance Abuse Prevention**
- **Public Health Program Management & Research Development**
- **Community Health Systems Strengthening**
- **Local Manufacturing**
- **Risk Communication and Community Engagement (RCCE)**
- **Promoting the One Health Approach**
- **Infrastructure Development**
- **Quality Assurance & Logistics Management Information System**
- **Events Planning & Management**
- **Waste Management**
- **Mapping of Public Health Assets**
- **Digital Health Information System**

How We Work

At ALMAH, our approach is rooted in collaboration, innovation, and community engagement.

We work closely with government health ministries, international health organizations, NGOs, and local communities to co-design and implement impactful health programs.

Our strategies include resource sharing, joint programs, and co-hosted events to ensure sustainable and effective health interventions.

By leveraging technology and data-driven insights, we continuously improve our services and adapt to the evolving health landscape in Africa.

Our strategies include:

Needs Assessment:

We Conduct thorough assessments to understand community health needs.

Program Design:

We Develop targeted programs based on evidence and best practices.

Implementation:

We Roll out programs with careful planning and resource management.

Monitoring and Evaluation:

We Continuously monitor progress and evaluate impact to ensure effectiveness and make necessary adjustments.

The Team



Mr. John Clinton
Founder/Executive Director



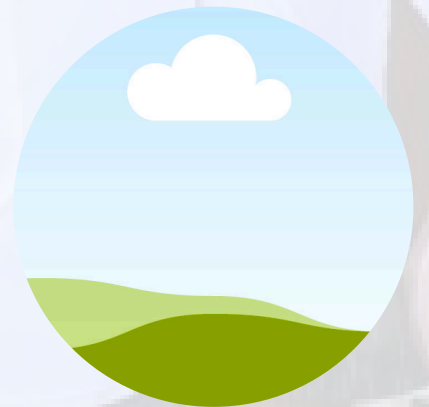
Chief Operating Officer



Chief Finance Officer



Program Manager



Head of Recruitment

Get in Touch



+234-9164206043



**ELWA Community, Paynesville City
Montserrado County, Monrovia, Liberia.**